

Technical Rider

Unusual Weather Phenomena Project

von Thom Luz

Production: Thom Luz und Bernetta Theaterproduktionen

A Co-Production with Gessnerallee Zürich, Théâtre de Vidy Lausanne, Kaserne Basel
Südpol Luzern und Theater Chur

Up to date 2016/04



Contents

1. General Information
2. Stage
3. Ton
4. Light
5. Subtitle/Projection
6. Specials
7. Dressing Rooms / Miscellaneous

1. General Information

Information about the Play

Duration: 75 minutes without a break

Involved Persons: 4 Musicians and 1 Sound designer
2 Technicians (Light/Projection, Sound)

Other involved Persons: Director and tour manager

We will travel at most with 9-10 persons

Contact

Light Li Sanli
mobil: +41 78 636 50 12
mail: li.sanli@me.com

Projections/
Subtitles Thom Luz
mobil: +41 76 304 14 85
thomasluz@gmx.ch

Sound Martin Hofstetter
mobil: +41 79 222 89 86
martin@ho-fi-ton.ch

Tourmanagement Gabi Bernetta
mobil: +41 79 419 20 34
Fix: +41 440 66 07
gabi.bernetta@gmx.net

Director Thom Luz
mobil: +41 76 304 14 85
thomasluz@gmx.ch

2. Stage

Set up time

We prefer to have a day for set up and rehearsal on the day before the show.
We need the help of 2 – 3 stage hands also for unloading and loading the set.

Set up time incl. configuration of lighting and sound check ca. 6 – 8 hours

Required Stage Hands

1 light technician / 1 Sound technician/ 1 Stage technician

The stage hands listed should be very familiar with the technical aspects of the venue.

General

- We need black curtains at the left and right hand side of the stage and also. one black curtain 3 m behind the Opera.
- Stage floor should be black, if not we need a black dance floor.
- The lighting control room has to set up with good sight lines to the stage.
Acoustical contact with the stage has to be direct.
- The Presenter shall have parking spaces available for both transporters, as near to the venue as possible.
- Unless otherwise agreed, takedown is to immediately follow the last performance.

Open Flame / Special Effects

- a lot Fog and Haze

Stage Dimension

Stage Width: 16 m (minimum)
Stage Depth: 16 m (minimum)
Height to Rig: 6 m (minimum)
Depth to Opera: 13 m (minimum)
Depth behind Opera: 3 m (minimum)

3. Sound

General

A 3-Way P.A. System appropriate to the Venue.
The P.A. must be delayed according to the position of the Opera.

2 x DI-Box (Amplification Nord Stage Piano and Bass-Rhodes)
3 x dynamic Vocal-mic at proscenium
1 x mic for guitar-amp

CH	Input	Mic	Insert	Position	FX
1	Bass Rhodes	DI		stage left	
2	Nord	DI		upstage right	
3	Git Amp (vocals)	e606/sm57		upstage left	
4	Vocals	SM58	(Comp)	proscenium	Reverb
5	Chor	SM58/SM57	(Comp)	proscenium	
6	Cello	SM58/SM57		proscenium	
7	Reverb Return L				
8	Reverb Return R				

additionally we need the following equipment:

7 x SM58/SM57/beta58/beta57/e935 (these mics will be used on stage, but will not be connected to the sound-desk)

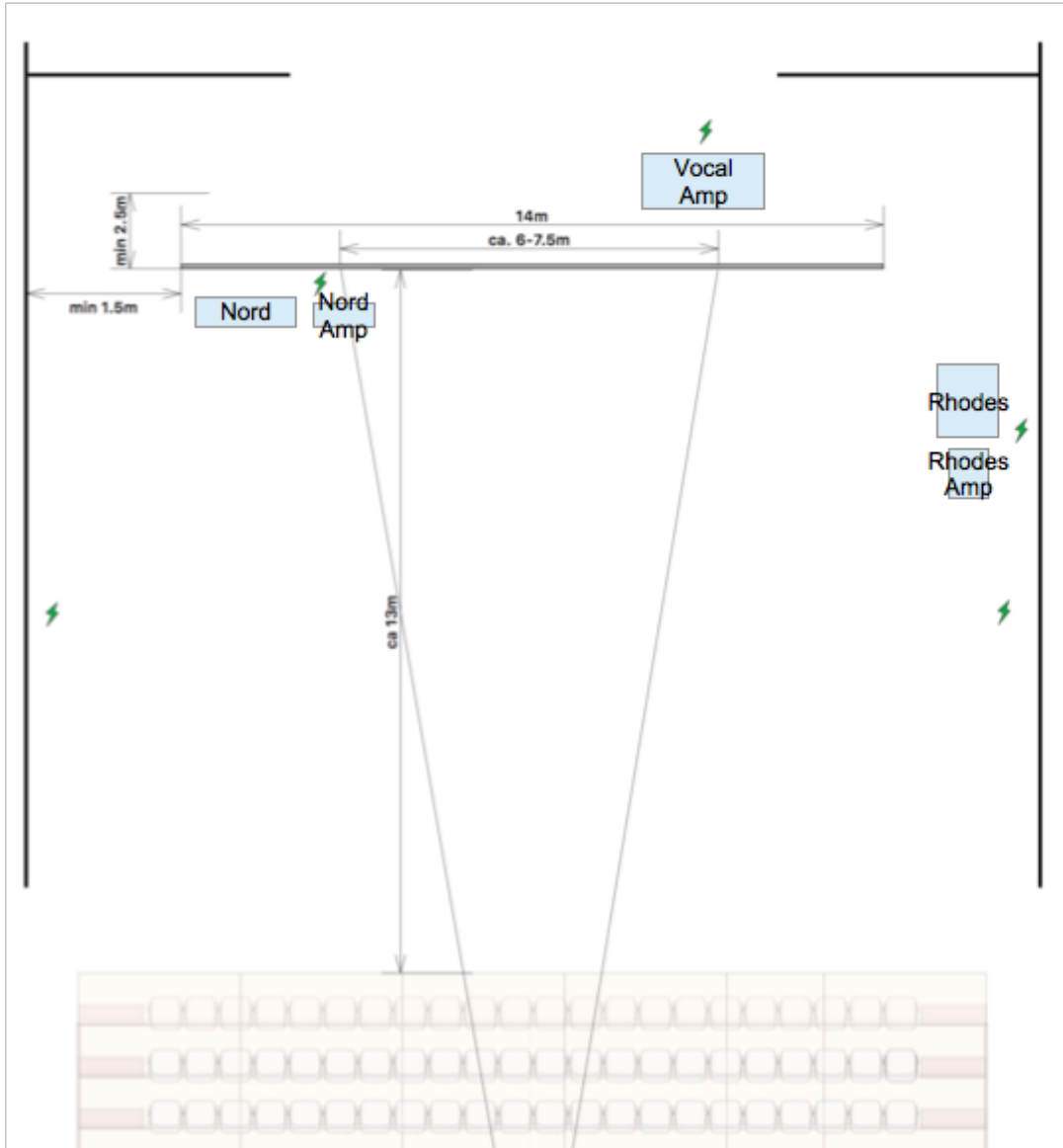
5 x mic-stand large (90-160 cm) without boom
2 x mic-stand large (90-160 cm) with boom
6 x mic stand small (42-65 cm) without boom

enough XLR-Cables!

1 x Mixing-Desk with at least 12 Mic-Inputs, (Internal-) Reverb Unit, i.e. Yamaha 01v96

Sound-current according to the stage plan.

We need an In-house sound engineer available for setup as well as during rehearsals and show!

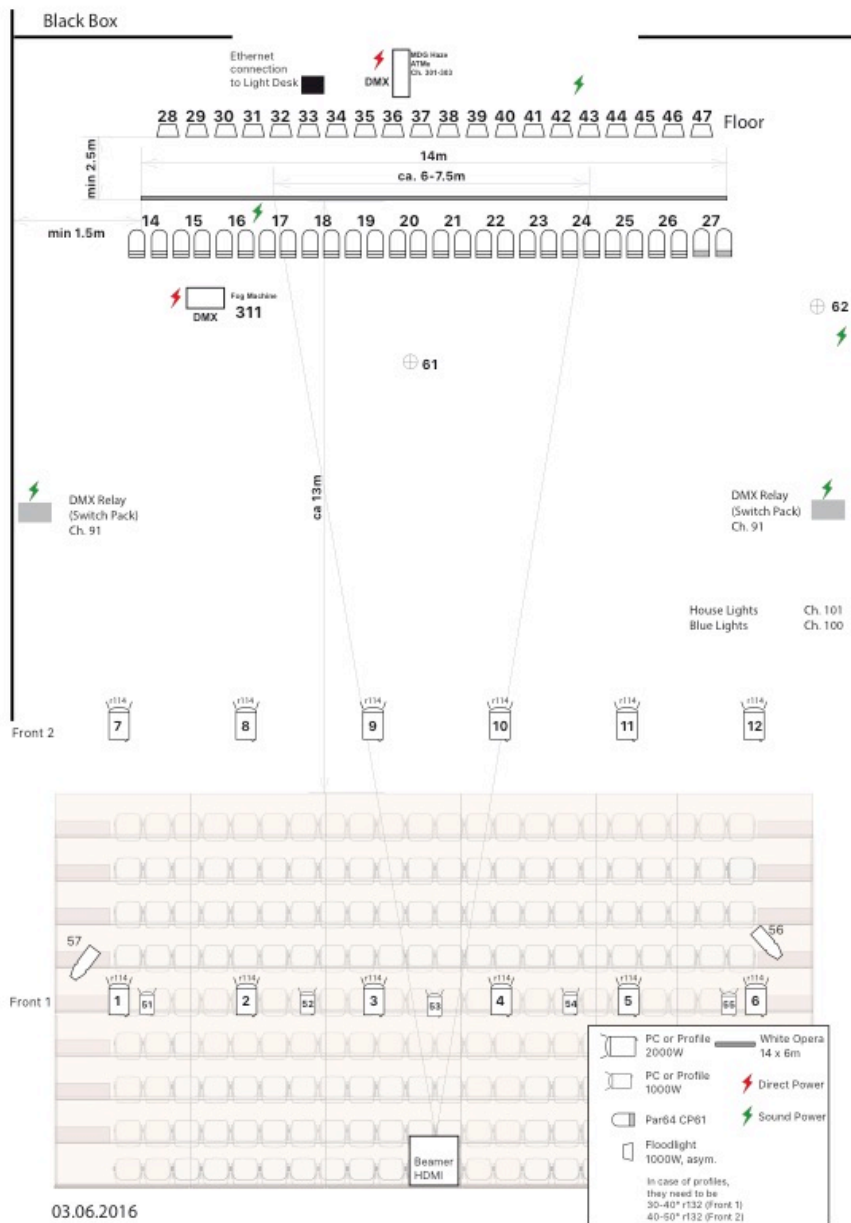


4. Lighting

Lighting Equipment to be provided by the Presenter

- 12 2 KW PC r114 with barn doors (2kW profiler 40°-50° also ok)
- 2 1 KW Profile 30°
- 20 1 KW asymeric floodlights without barndoors on the floor behind the opera
- 28 Pars 64 CP61
- 5 PC 1000W with barn doors (only in venues with elevated stage. 1kW profiler also ok)
- 1 **min. 2kg CO2 bottle with Dip Tube (fr: Tube Plongeur)**

We will bring our lighting control board (ETC ION) with us.



5. Frontal Projection | Subtitles

Equipment to be provided by the Preseneter

Beamer:	Panasonic mit 6500 Ansilumen, (or similar)
Objective:	Standard object lens 1.8 – 2.4. depending on the distance to the Opera
Display detail:	Width ca 6-8 m
Opera:	Width 13 m x Hight 6 m (Opera we will bring with us)



If you cannot provide one of our requirements, please contact us. We usually find a solution for everything, if we are informed in time. This means BEFORE we arrive at the venue!

6. Specials

For the filling of the balloons we will need **for each performance:**

- 1 Bottle of Helium M30 condensed 2.2, incl. inflator to fill the balloons**
- Size of the gas bottle: 30 L**
- Content: 6.0m3**

as well as we need

2 bottles of CO2 with riser pipe with a minimum of 2 KG of filling quantity for the MDG Atme Hazer, 2 Kg will be enough for 5 performances

We provide:

- 1 Computer + Interface for MIDI
- 1 Computer for video (HDMI)
- 1 Opera 13x6m
- 1 MDG Hazer
- 1 MDG Fog-Machine
- 1 Lighting desk ETC ION
- 1 DMX Relays (DMX Switchbox)

7. Dressing Rooms / Miscellaneous

- During the entire stay – from day-of-arrival to day-of-departure – at minimum two lockable dressing rooms with clean and well-maintained toilets and showers are to be available.
- During set up and on performance days please have sufficient mineral water and an assortment of snacks and fresh fruit available.
- After every show all white shirts must be cleaned for the next day and also the sweat suit (silver) and the lingerie.**